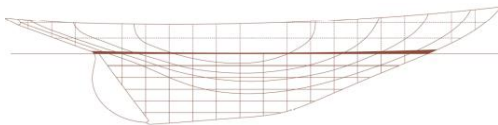


Gometra 1925

Design n° 308 by Alfred Mylne



Designer:	Alfred Mylne
Shipyard:	Bute Slipdock Co.
Year:	1925
Length Over All:	13.11 m
Length Water Line:	8.53 m
Beam:	2.81 m
Draft:	1.85 m
Sail Area:	88.00 m ²
Displacement:	10.00 t

Full Electric Propulsion



Ready for Race



The Gold Ship

Find out story and details at: www.gometra1925.it

For further info: [Matteo Rossi](mailto:Matteo.Rossi) +39 348 8508979